

KINGOYA

AGRITOLS CATALOGUE



CARBON GRAPHITE

SUPERLITE

PROBABLY THE
WORLD'S **LIGHTEST**
HARVESTING POLE

2.0X HIGHER TENSILE
STRENGTH

40% LIGHTER THAN
NORMAL POLES



LIMITS
ELECTROCUTION
HAZARDS

Available in :

6M (L) X 34.3MM/30.8MM (Ø) X 1.75MM (T)

6M (L) X 39.0MM/35.5MM (Ø) X 1.75MM (T)

6M (L) X 43.4MM/39.6MM (Ø) X 1.90MM (T)

8M (L) X 39.0MM/35.5MM (Ø) X 1.75MM (T)

8M (L) X 43.4MM/39.6MM (Ø) X 1.90MM (T)



NETBARROW

THE FUTURE OF FFB EVACUATION

WHY NETBARROW IS THE NO 1 CHOICE

- The netting is made of durable UVPE
- Allows the harvester to move faster
- Strain debris from the fruits
- Reduce fruit bruising to improve OER levels

Four Types of Tires to Select



TRACK PU
FOAM 4.00-8



PNEUMATIC
3.50-8



PU FOAM
3.50-8



PNEUMATIC
20" X1.95



KING*YA HARVESTER'S BEST FRIEND

SKU CATEGORY: HARVESTING TOOLS, POLES
MATERIAL: ALUMINIUM T6-6061

PLATINUM ALUMINIUM HARVESTING POLES

MILL FINISH

Available in :

32 MM Ø x 1.60MM T
 COMES IN LENGTH OF
4M, 6M, 7M & 8M

38 MM Ø x 1.57MM T
 COMES IN LENGTH OF
4M, 6M, 7M & 8M

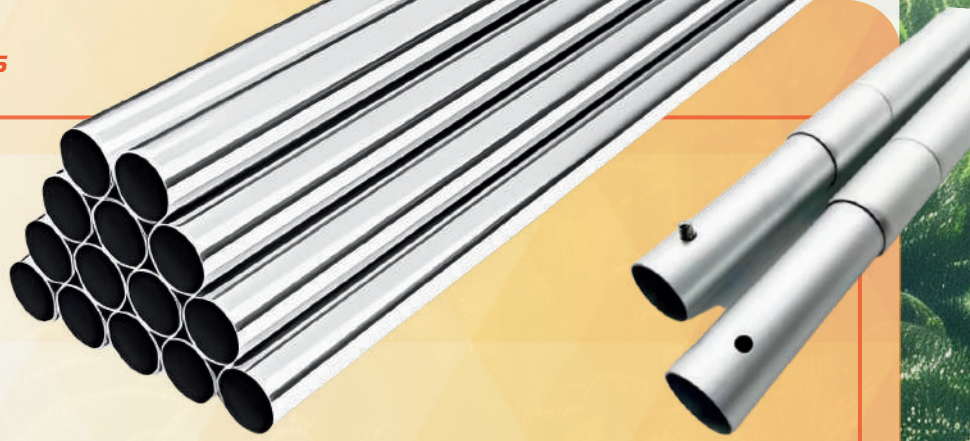
45 MM Ø x 1.60MM T
 COMES IN LENGTH OF
4M & 6M

45 MM Ø x 1.90MM T
 COMES IN LENGTH OF
7M & 8M

TELESCOPIC POLE

38MM Ø + 32MM Ø
 COMES IN THE SET OF
4M+ 4M & 6M + 6M

45MM Ø + 38MM Ø
 COMES IN THE SET OF
**4M + 4M, 6M + 6M,
 7M + 7M & 8M + 8M**



SKU CATEGORY: CLAMPS FOR POLES WITH SLIT

NYLON HINGED CLAMP C/W L-BOLT

FOR CLAMPING POLE 32MM-38MM
 FOR CLAMPING POLE 38MM-45MM

NYLON CLAMP C/W ELBOW BOLT
 FOR CLAMPING POLE 32MM-38MM
 FOR CLAMPING POLE 38MM-45MM

NYLON HINGED CLAMP C/W BOLT SCREW

FOR CLAMPING POLE 32MM-38MM
 FOR CLAMPING POLE 38MM-45MM



WHY OUR POLES ARE BEST IN CLASS?

- Ultra-Lightweight for Less Fatigue
- Superior Material Quality & Build - T6061 ALUMINUM ALLOY.
- Ergonomic and Field-Friendly Design
- Adjustable Telescopic Design for Versatility
- Designed with Worker Productivity in Mind
- Durable and Weather-Resistant Aluminium Construction
- Proven Productivity Improvements

SKU CATEGORY: CLAMPS FOR POLES WITHOUT SLIT

NYLON SPECIAL HINGED CLAMP C/W BOLT SCREW

FOR CLAMPING POLE 32MM-38MM
 FOR CLAMPING POLE 38MM-45MM

NYLON SPECIAL HINGED CLAMP C/W ALLEN KEY & L-BOLT

FOR CLAMPING POLE 32MM-38MM
 FOR CLAMPING POLE 38MM-45MM



SKU CATEGORY: STEEL CLAMPS

SPECIAL CLAMPS

FOR CLAMPING POLE 38MM 32MM
 FOR CLAMPING POLE 45MM 38MM



ROUND CLAMPS

FOR CLAMPING POLE 38MM
 FOR CLAMPING POLE 45MM



U-CLAMPS WITH WING NUTS

FOR CLAMPING POLE 38MM
 FOR CLAMPING POLE -45MM



REVO NYLON SICKLE HOLDER

32MM POLE
 38MM POLE



NYLON CLAMP C/W ALLEN KEY

32MM POLE
 38MM POLE



POLYMER GRIP NON-CONDUCTIVE (1 METRE)

OFFSET LOCK
 FITTED AT 38 MM + 32MM POLES
 FITTED AT 45 MM + 38MM POLES



POLE END CAP

32MM | 38MM | 45MM



SKU CATEGORY: HARVESTING TOOLS, PROCUT SICKLES
MATERIAL: JAPANESE SPRING STEEL SUP9
WEIGHT: 0.6 KG - 1.10 KG
HARDNESS: 700 - 740 HV

PROCUT

SICKLE SERIES

PRE-SHARPEN SICKLES

1 MONTH WARRANTY AGAINST BREAKAGE
TERMS & CONDITION APPLIES



PHENOMENAL WHITE PREMIUM SICKLE C/W NYLON HINGED CLAMP

32MM
38MM

PLUG AND PLAY



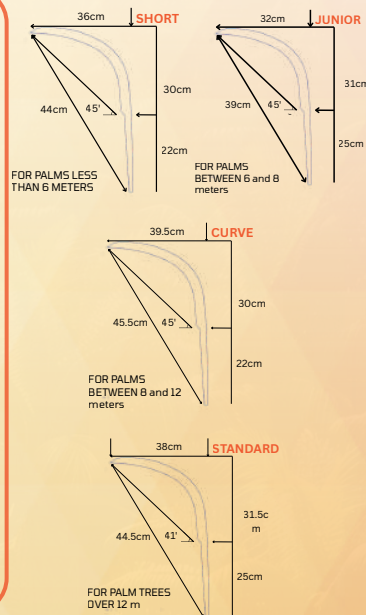
REVOLUTIONISED D WHITE SICKLE C/W BOLT & NUT

32MM
38MM



HARVESTING SICKLE SPRING STEEL C/W 6MM HOLE

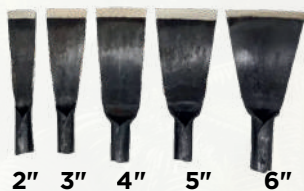
GOLD - STANDARD
 WHITE - STANDARD
 BLACK - STANDARD



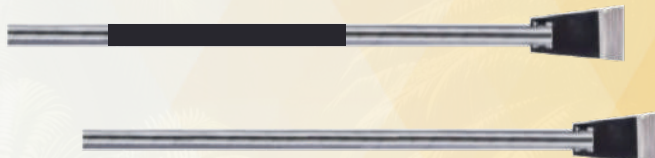
SKU CATEGORY: NINJA CHISEL
MATERIAL: JAPANESE SPRING STEEL SUP9
WEIGHT: 0.4 KG - 1.30 KG
HARDNESS: 700 - 740 HV

NINJA

CHISEL SERIES



HARVESTING CHISEL
 COMES IN SIZES OF 2", 3", 4", 5" & 6"



HARVESTING CHISEL FLAT C/W 2 METER STEEL PIPE HANDLE
 COMES IN SIZES OF 2", 3", 4", 5" & 6"

HARVESTING CHISEL FLAT
 COMES IN SIZES OF 2", 3", 4", 5" & 6"

SAFETY COVER FOR SICKLES

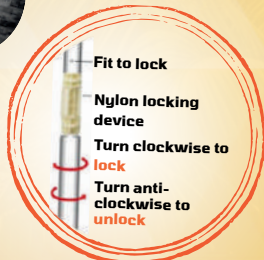
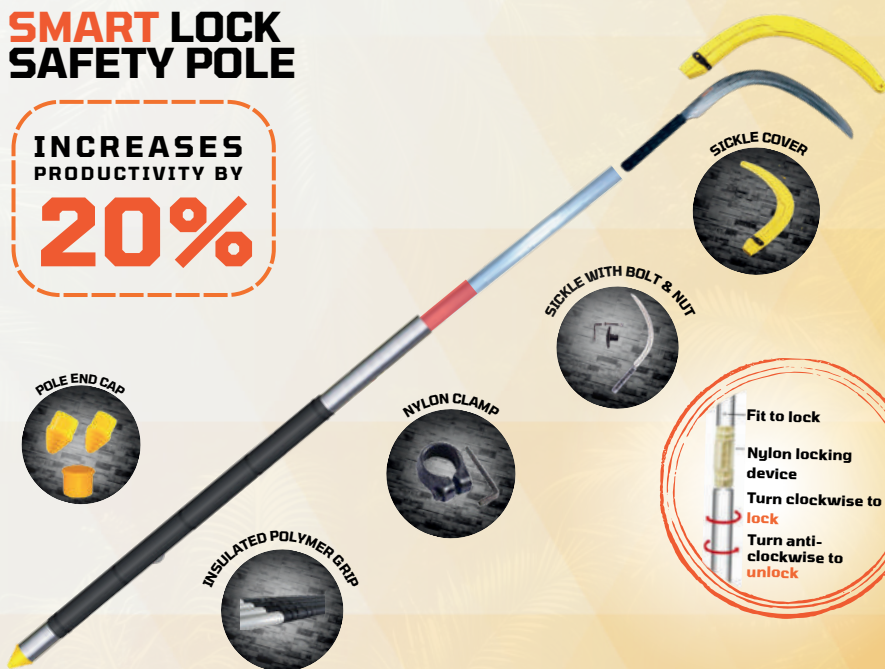


SAFETY COVER FOR CHISELS
 2" - 6"

SMART LOCK SAFETY POLE

INCREASES PRODUCTIVITY BY

20%



HANDY TOOL SHARPENER SIGNATURE

SHARPENING STONE
 CURVE & FLAT



SAFER WORKERS. SMARTER PLANTATIONS.

HEAD WEAR

HELMETS



MASKS



EAR PLUGS



EAR MUFFS



GOGGLES

ILLUMINATED VESTS



COVERALL



BODY WEAR

RAINSUIT

S / M / L / XL / XXL

RAINCOAT WITH HOOD, KNEE LENGTH

S | M | L | XL | XXL

RAINCOAT W PONCHO

52"X80" | 42"X70"

APRON WITH POLYESTER LINING

0.35MM X 2" X 3"

0.35MM X 2" X 4"

0.35MM X 19" X 90"

HARNESS



COVERALL (BOILER SUIT)



GLOVE WEAR



FOOT WEAR

FLEXIGRIP



KNITTED



SAFETY GUMBOOT

YELLOW '15 CW
STEEL TOE CAP AND
MID SOLE



SAFETY SHOE



LEATHER

NITRILE

MATERIAL: JAPANESE SPRING STEEL
SUPERWEIGHT: 0.3 KG - 1.50 KG
HARDNESS: 700 - 740 HV

UPKEEP TOOLS, SPIKES

FFB LOADING SPIKE

BLACK PIPE T-HANDLE
 HD BLACK PIPE T-HANDLE
 ALL SPRING STEEL D-HANDLE



SPECIAL 'J' HOOK

11MM DIAMETRE SPRING STEEL 12"
 11MM DIAMETRE SPRING STEEL 14"
 11MM DIAMETRE SPRING STEEL 16"



BUSH KNIFE - SPRING STEEL

COMES IN THE SIZES OF
 18" TO 24"



LOOP ENDS

COMES WITH
 5, 7 OR 9 LOOPS



NAILS ROUNDED TIPS

COMES WITH
 14 NAILS OR 18 NAILS



FERTILIZER DISPENSER BOWL

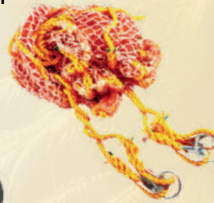
AVAILABLE IN SIZES OF
 200 ML (RED),
 350 ML (BLUE),
 400 ML (ORANGE),
 480 ML (GREEN)
 520 ML (YELLOW)



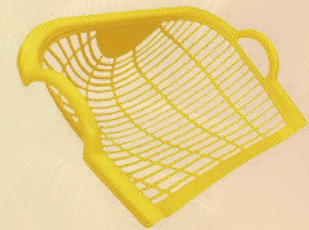
FFB LOADING NET

AVAILABLE IN SIZES OF
 7FT X 7FT & 8FT X 8FT

FERTIIZER BIN C/W STRAP AND SPONGY PADDING



LOOSE FRUIT COLLECTING BASKET (VIRGIN GRADE MATERIAL)



KINGOYA HARVESTER'S BEST FRIEND

AGRITECH EXPERIENCE CENTRE

KINGOYA, was founded in 1998, arising from the need for better quality and long lasting tools to help boost productivity in the oil palm industry. **KINGOYA** is now the leading provider of Agritools to the palm oil sector globally serving over 400 customers in 24 countries. Our innovation-driven products are reputed to deliver better efficiency and increased productivity for our customers with workers safety and comfort at the forefront of all our product offerings.

Key features of Kingoya tools which makes it the best in class are as follows:

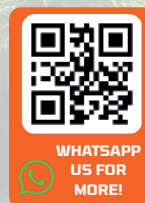
- Premium quality materials that is safe, durable and cost efficient.
- Up to twelve months warranty on all product categories.
- Exclusive Distributors in Malaysia, Indonesia, India, Sri Lanka, Nigeria, Central Africa and Central America to better serve customers.
- Continuous Product Improvement and innovation through Kingoya's Agritech Research Centre.
- Regular Workshops & In-field Product training for clients; to help harvesters and workers boost productivity.

We are excited to welcome you to the **KINGOYA AGRITECH EXPERIENCE CENTRE**, located at our factory in Shah Alam, Malaysia. Come experience cutting-edge plantation technology and innovation first hand with live demonstrations, preview to some of our latest product developments and introduction to our **IPLANT** plantation management software system.



KINGOYA ENTERPRISE SDN. BHD.
 43, Jalan Bulan U5/166,
 Bandar Pinggiran Subang 2 Seksyen U5,
 40150 Shah Alam,
 Selangor, Malaysia
 +603 78450187
 +603 78590319

PT IRGA KINGOYA AGRINOVASI
 Kantor Irga Kingoya Medan,
 Jl. Sultan Serdang No.101, Telaga Sari,
 Tanjung Morawa, Deli Serdang Regency,
 North Sumatra 20362, Indonesia
 +62 852 8024 4681
 +62 21 2960 1428



WHATSAPP
 US FOR
 MORE!



CONTACT US AT SALES@KINGOYA.AG WWW.KINGOYA.AG